



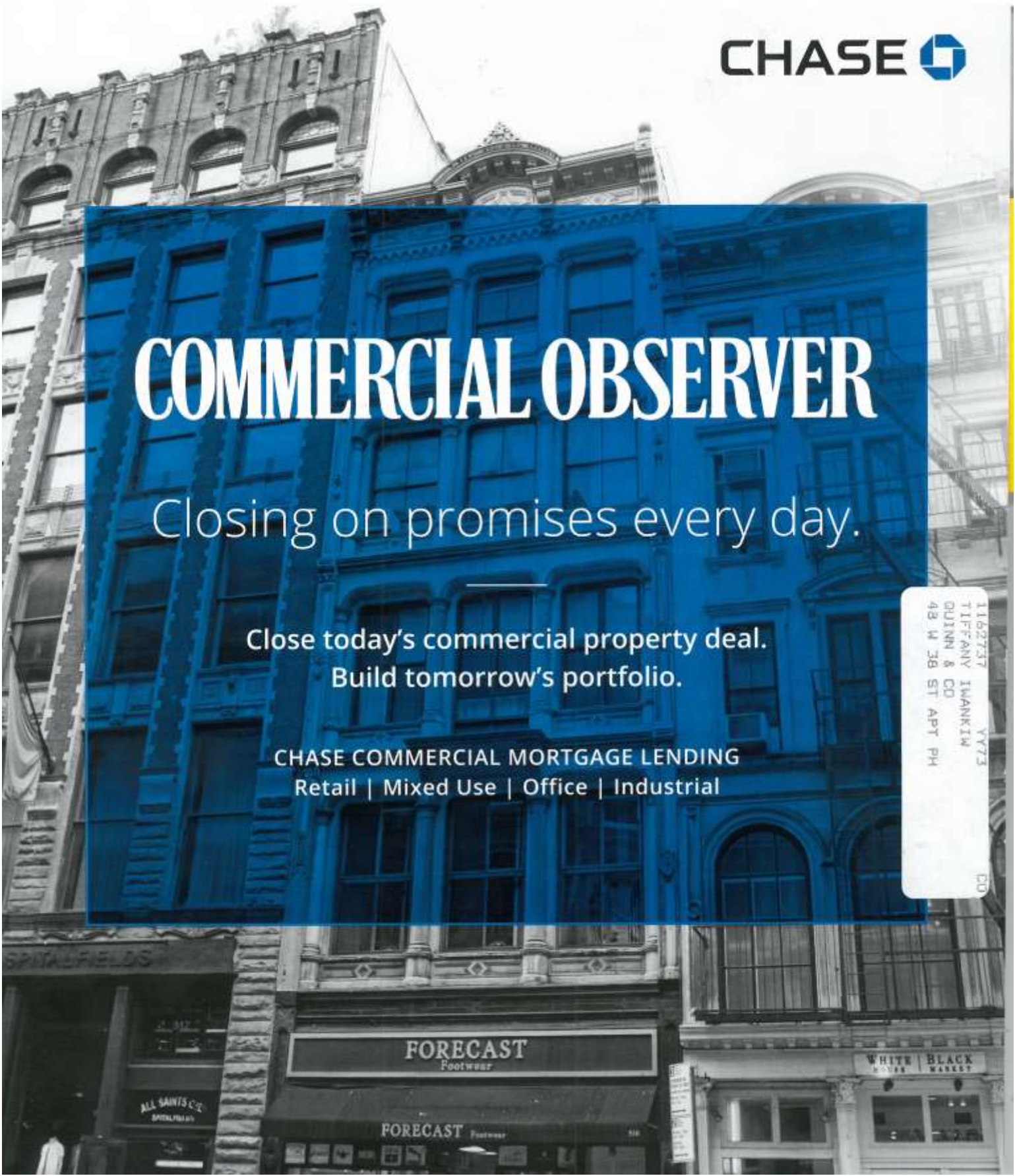
# COMMERCIAL OBSERVER

Closing on promises every day.

Close today's commercial property deal.  
Build tomorrow's portfolio.

CHASE COMMERCIAL MORTGAGE LENDING  
Retail | Mixed Use | Office | Industrial

1162737 YY73  
TIFFANY IWANKIM  
QUINN & CO  
48 W 38 ST APT PH  
CO



# Chart Lease

Lease charts reflect deals closed or announced from January 23 to January 27.

Information on leases, sales and financing deals can be sent to Max Gross at [mgross@commercialobserver.com](mailto:mgross@commercialobserver.com).

Office	SQ. FEET	TENANT	LANDLORD	BROKERS
463 Seventh Avenue	31,607	Services for the UnderServed	Adams & Co.	David Levy of Adams & Co. represented the landlord in-house; David Lebenstein and Debra Wollens of Cushman & Wakefield represented the tenant.
205 West 39th Street	27,519	Calvin Klein	n/a	JLL's Matthew Astrachan, Mitchell Konsker and Steven Bauer represented the tenant; EVO Real Estate Group's Mitchell Cooperstock and Albert Wu are the leasing brokers for the building.
485 Lexington Avenue	26,714	Xerox	SL Green Realty Corp.	Robert Stillman and Conor Denihan of CBRE represented the tenant; David Kaufman represented the landlord in-house.
45 Rockefeller Plaza	18,056	Hudson Housing Capital	Tishman Speyer	CBRE's Greg Maurer-Hollaender, Lewis Miller and Brad Needleman represented the tenant; Samantha Augarten, Blythe Kinsler and Joshua McGuire represented the landlord in-house.
142 West 57th Street	15,586	WeWork	L&L Holding Company, Mitsubishi Corporation, GreenOak Real Estate	Peter Riguardi and Alexander Chudnoff of JLL represented the tenant; Andrew Wiener of L&L represented the landlords in-house.
250 West 55th Street	15,050	Fairstead Capital	Boston Properties	CBRE's Taylor Scheinman and Stephen Siegel represented the tenant; Christie Harle, Caroline Merck, Sam Seiler and Peter Turchin also of CBRE represented the landlord.
420 Lexington Avenue	12,507	Conduent	SL Green Realty Corp.	Conor Denihan, Peter Gamber and Robert Stillman of CBRE represented Conduent; David Kaufman, Paul Milunec and Adam Weissleder represented SL Green in-house.
The Bridge (Roosevelt Island)	9,200	Two Sigma Investments	Forest City Ratner Companies	Neil Goldmacher and Josh Friedman of Newmark Grubb Knight Frank represented the tenant; Mary Ann Tighe, Evan Haskell, David Caperna, Evan Fiddle, Sacha Zarba and Ross Zimbalist of CBRE represented the landlord.
251 Park Avenue South	7,663	Alfa Development	Feil Organization	Devon Binns of Green Pond Road R.E. represented the tenant; Robert Fisher represented the landlord in-house.
251 Park Avenue South	7,659	The Points Guy	Feil Organization	Stephen Berliner of Savills Studley represented the tenant; Robert Fisher represented the landlord in-house.
251 Park Avenue South	7,656	Globant	Feil Organization	Deborah van der Heyden, Paul Ferraro and Natalie Touzet of JLL represented the tenant; Robert Fisher represented the landlord in-house.
Retail	SQ. FEET	TENANT	LANDLORD	BROKERS
252 West 37th Street	5,500	Jonathan Simkhai	Eretz Group	Evangelos (Angelo) Karras of Douglas Elliman represented the tenant; Jamie Jacobs and Brittany Silver of Newmark Grubb Knight Frank represented the landlord.
7 Bell Slip (Brooklyn)	1,000	Van Leeuwen Artisan Ice Cream	Park Tower Group	Peter Braus, Peter Levitan, Garry Steinberg and Jaime Schultz of Lee & Associates represented both the tenant and the landlord.